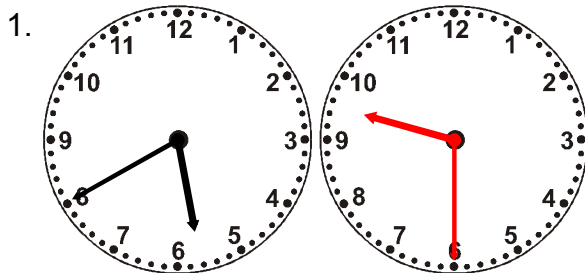
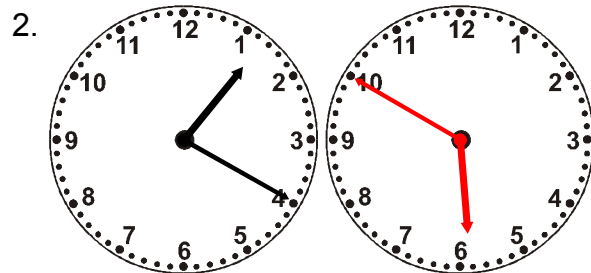


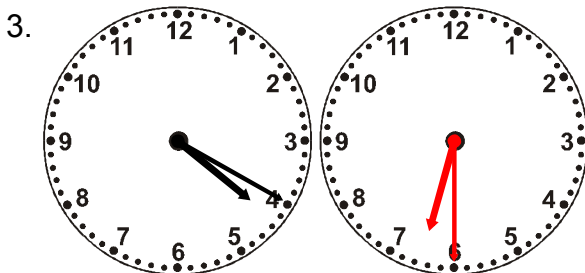
Draw the clock hands to show the passage of time.



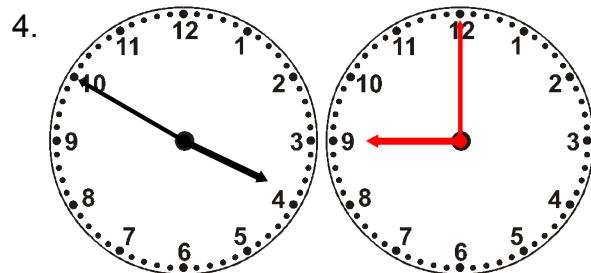
What time will it be in 3 hours 50 minutes?



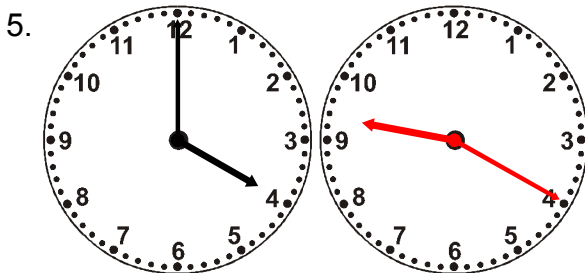
What time will it be in 4 hours 30 minutes?



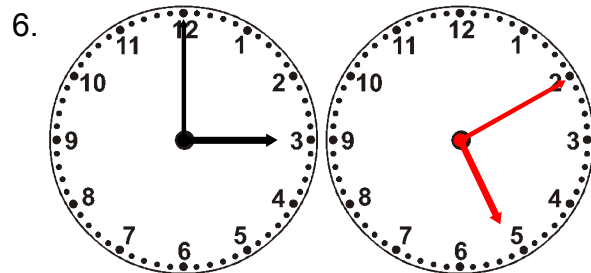
What time will it be in 2 hours 10 minutes?



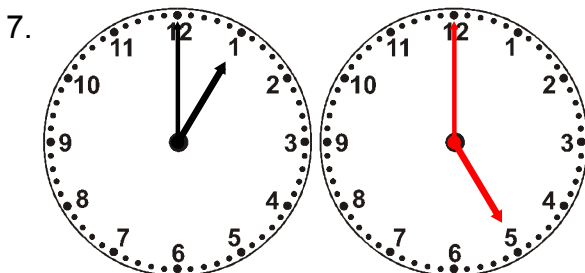
What time will it be in 5 hours 10 minutes?



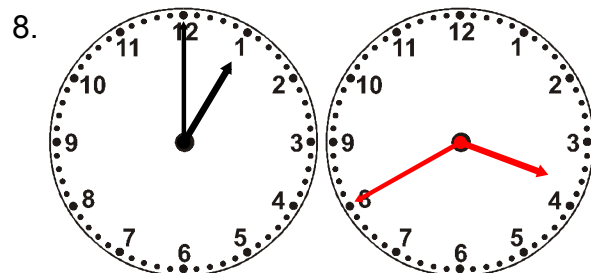
What time will it be in 5 hours 20 minutes?



What time will it be in 2 hours 10 minutes?



What time will it be in 4 hours 0 minutes?



What time will it be in 2 hours 40 minutes?